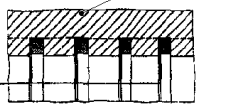
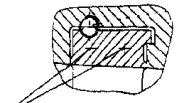


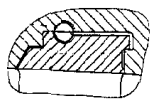
DETAIL Z  
PART.Z



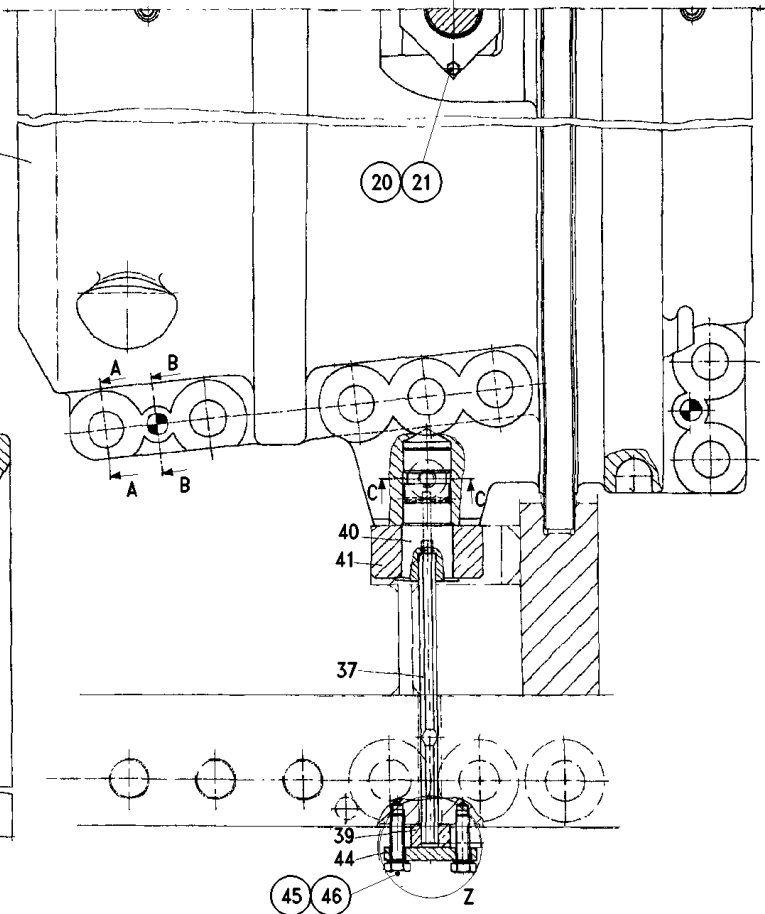
DETAIL X  
PART.X



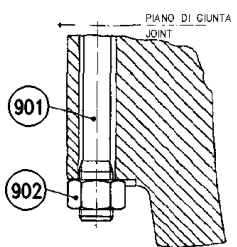
DETAIL Y  
PART.Y



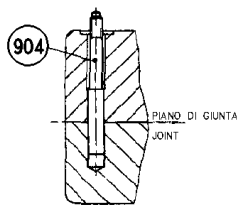
SECTION D-D  
SEZIONE D-D



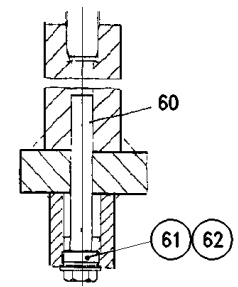
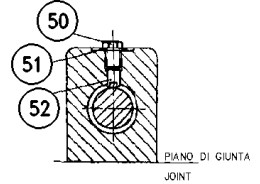
SECTION A-A  
SEZIONE A-A



SECTION B-B  
SEZIONE B-B



SECTION C-C  
SEZIONE C-C



STATORE 2 COMPRESSORE  
2ND COMPRESSOR STATOR CARRIER ASS.Y

**MBA19HA031G**