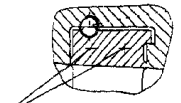


DETAIL Z
PART.Z

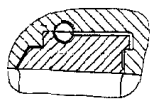


DETAIL X
PART.X

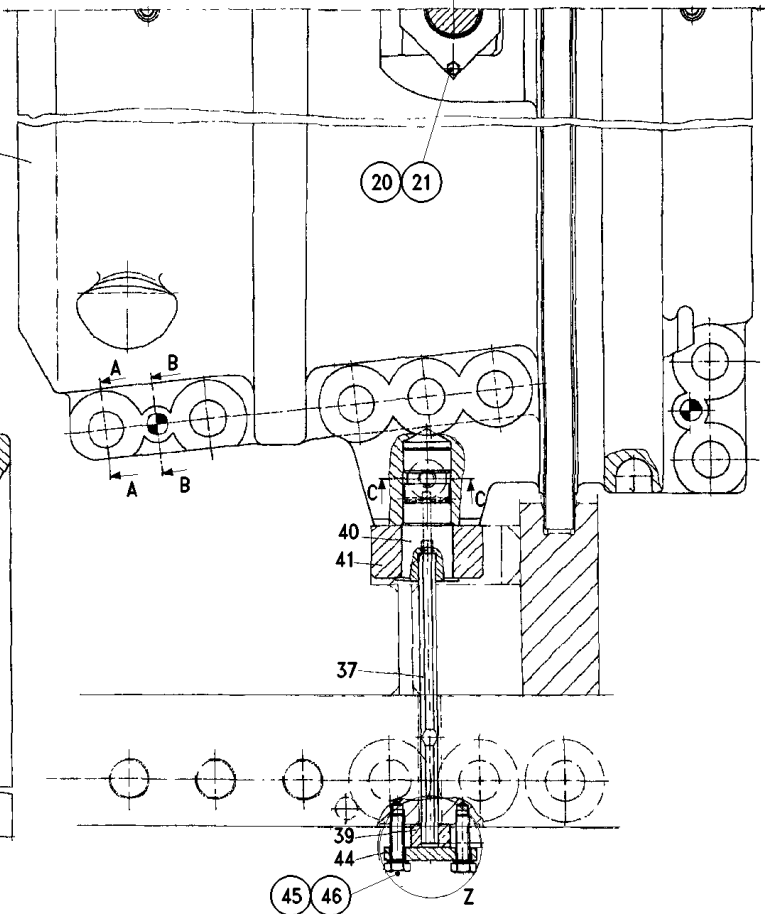


FORI PER SMONTAGGIO
DEL DISCO PALETTATO

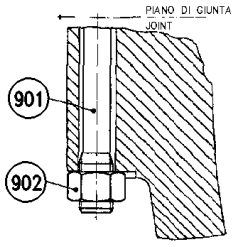
DETAIL Y
PART.Y



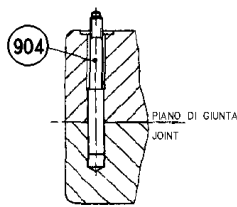
SECTION D-D
SEZIONE D-D



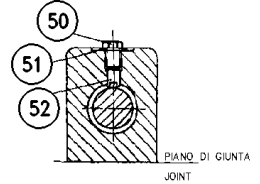
SECTION A-A
SEZIONE A-A



SECTION B-B
SEZIONE B-B



SECTION C-C
SEZIONE C-C



STATORE 2 COMPRESSORE
2ND COMPRESSOR STATOR CARRIER ASS.Y

MBA19HA031G