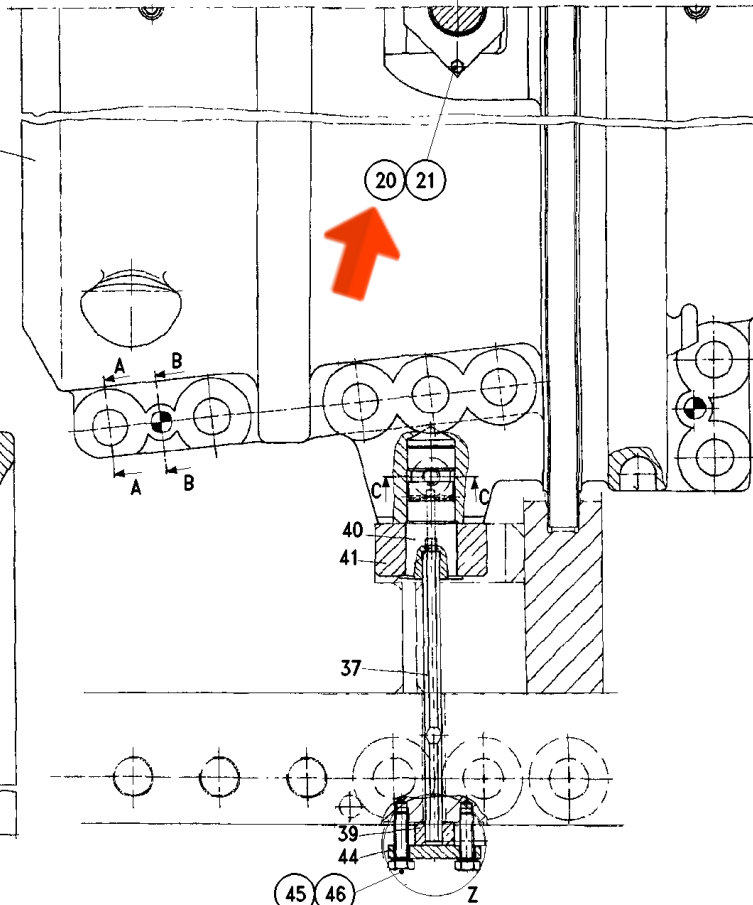


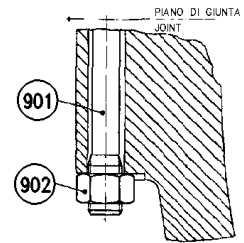
DETAIL Z  
PART.Z



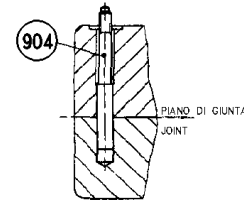
SECTION D-D  
SEZIONE D-D



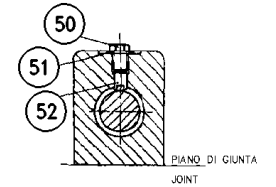
SECTION A-A  
SEZIONE A-A



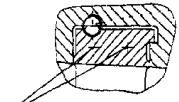
SECTION B-B  
SEZIONE B-B



SECTION C-C  
SEZIONE C-C

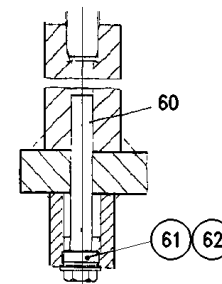
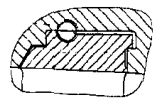


DETAIL X  
PART.X



FORI PER SMONTAGGIO  
DEL DISCO PALETTATO

DETAIL Y  
PART.Y



STATORE 2 COMPRESSORE  
2ND COMPRESSOR STATOR CARRIER ASS.Y

**MBA19HA031G**